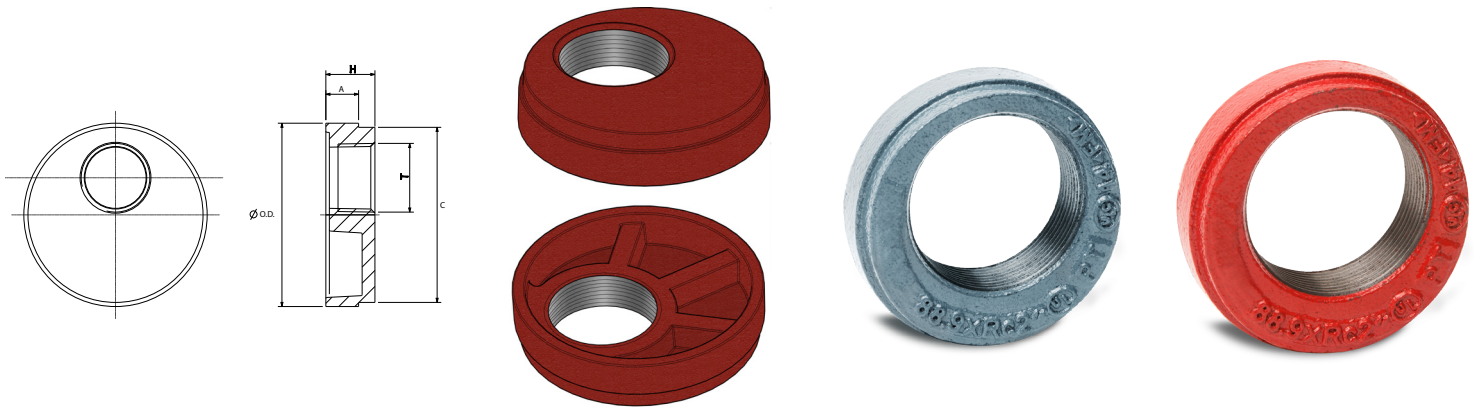


GROOVED END CAP WITH HOLE GED



THREADED BSPT

page 1 of 2



Grooved end caps with threaded BSPT eccentric holes provide an economical and efficient method of reducing grooved piping systems.

Reference		Nominal size		Pipe Ø O.D. - T	Grooved end cap with hole dimensions			Weight	Marking
Red	Galva	NPS inch	DN mm	mm	H mm	A mm	C mm	kg	
GER	GEG	1½ - 1	40 - 25	48,3 - 1"	23,8	15,9	45,1	-	GED ¹⁾
GER	GEG	2 - 1	50 - 25	60,3 - 1"	23,8	15,9	57,2	0,29	GED
GER	GEG	2 - 1¼	50 - 32	60,3 - 1¼"	23,8	15,9	57,2	0,33	GED ¹⁾
GER	GEG	2 - 1½	50 - 40	60,3 - 1½"	23,8	15,9	57,2	0,18	GED
GER	GEG	2½ - 1	65 - 25	73,0 - 1"	23,8	15,9	69,1	0,38	GED
GER	GEG	2½ - 1¼	65 - 32	73,0 - 1¼"	23,8	15,9	69,1	0,40	GED
GER	GEG	2½ - 1½	65 - 40	73,0 - 1½"	23,8	15,9	69,1	0,35	GED
GER	GEG	2½ - 2	65 - 50	73,0 - 2"	23,8	15,9	69,1	0,28	GED
GER	GEG	2½ - 1	65 - 25	76,1 - 1"	23,8	15,9	72,3	0,40	GED
GER	GEG	2½ - 1¼	65 - 32	76,1 - 1¼"	23,8	15,9	72,3	0,40	GED
GER	GEG	2½ - 1½	65 - 40	76,1 - 1½"	23,8	15,9	72,3	0,39	GED
GER	GEG	2½ - 2	65 - 50	76,1 - 2"	23,8	15,9	72,3	0,28	GED
GER	GEG	3 - 1	80 - 25	88,9 - 1"	23,8	15,9	84,9	0,56	GED
GER	GEG	3 - 1¼	80 - 32	88,9 - 1¼"	23,8	15,9	84,9	0,56	GED
GER	GEG	3 - 1½	80 - 40	88,9 - 1½"	23,8	15,9	84,9	0,51	GED
GER	GEG	3 - 2	80 - 50	88,9 - 2"	23,8	15,9	84,9	0,52	GED
GER	GEG	4 - 1	100 - 25	114,3 - 1"	25,4	15,9	110,1	0,83	GED
GER	GEG	4 - 1¼	100 - 32	114,3 - 1¼"	25,4	15,9	110,1	0,92	GED
GER	GEG	4 - 1½	100 - 40	114,3 - 1½"	25,4	15,9	110,1	0,92	GED
GER	GEG	4 - 2	100 - 50	114,3 - 2"	25,4	15,9	110,1	0,89	GED
GER	GEG	5 - 1½	125 - 40	139,7 - 1½"	25,4	15,9	135,5	1,24	GED ²⁾
GER	GEG	5 - 2	125 - 50	139,7 - 2"	25,4	15,9	135,5	1,24	GED
GER	GEG	5 - 2	125 - 50	141,3 - 2"	25,4	15,9	137,0	1,25	GED
GER	GEG	6 - 1	150 - 25	165,1 - 1"	25,4	15,9	160,9	1,64	GED
GER	GEG	6 - 2	150 - 50	165,1 - 2"	25,4	15,9	160,9	1,73	GED
GER	GEG	6 - 1	150 - 25	168,3 - 1"	25,4	15,9	164,0	1,90	GED
GER	GEG	6 - 1½	150 - 40	168,3 - 1½"	25,4	15,9	164,0	-	GED ¹⁾
GER	GEG	6 - 2	150 - 50	168,3 - 2"	25,4	15,9	164,0	1,76	GED
GER	GEG	8 - 2	200 - 50	219,1 - 2"	30,2	19,1	214,4	3,13	GED
GER	GEG	10 - 1	250 - 25	273 - 1"	32,0	19,1	268,3	-	GED ²⁾
GER	GEG	10 - 2	250 - 50	273 - 2"	32,0	19,1	268,3	6,21	GED ²⁾
GER	GEG	12 - 1	300 - 25	323,9 - 1"	32,0	19,1	318,3	-	GED ²⁾
GER	GEG	12 - 2	300 - 50	323,9 - 2"	32,0	19,1	318,3	8,38	GED ²⁾

General notes:

- ¹⁾ No FM- and UL-approval / ²⁾ No FM approval

Material specifications

Housing: ductile iron conform to ASTM A536 GR 65-45-12

Coating:

- Hot dip galvanized
- Red paint coating RAL 3000, EPD Epoxy coating

Working pressure

300 PSI/2068 kPa/20,7 barg

General notes:

- Pressure ratings listed are CWP (cold working pressure) or MWP (maximum working pressure) at a maximum service temperature of 50°C. This rating may occasionally differ from maximum working pressure listed and/or approved by UL and/or FM, as testing conditions and test pipes can differ. For more information, please contact info@pipinglogistics.eu.
- Maximum working pressure listed is the total of internal and external pressures based on standard weight (ANSI) steel pipe and standard roll or cut groove in accordance with Profit specifications. For more information, please contact info@pipinglogistics.eu.
- For one time field test only, the maximum joint working pressure may be increased by 150% the figure shown.
- Warning: Piping systems must always be depressurized and drained before attempting disassembly and/or removal of any components.
- Profit reserves the right to change specifications, designs and/or standard equipment without notice and without incurring in any obligations.
- Profit red coated products are intended for piping with indoor application (EN 12944-2 corrosivity category C1 & C2). For outdoor installations near the sea (corrosivity category C3) we advise the use of our hot dip galvanized couplings and fittings. For application in corrosivity category C4 (higher salinity climate) or higher, please contact info@pipinglogistics.eu.
- We advise to always store our products in closed and dry environments.