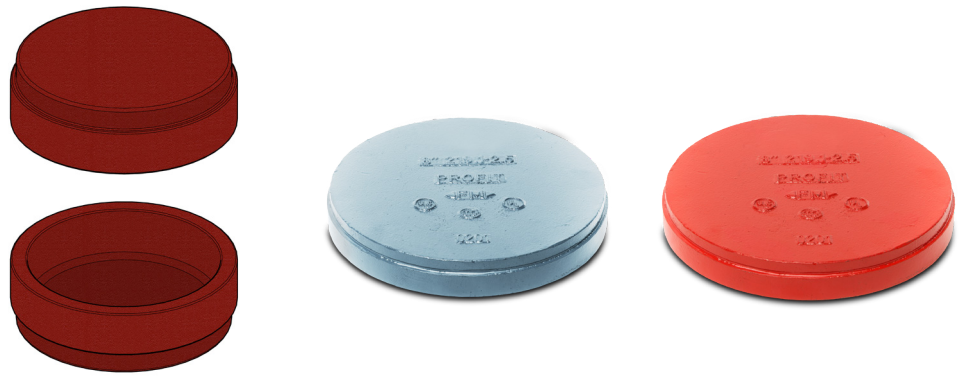
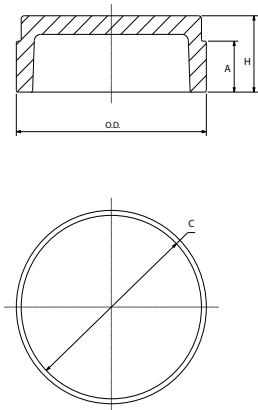


GROOVED END CAP GE



Grooved end caps provide an economical and efficient method of capping grooved piping systems.

Reference		Nominal size		Pipe Ø O.D.	Grooved end cap dimensions			Weight	Marking
Red	Galva	NPS inch	DN mm	mm	H mm	A mm	C mm	kg	
GER	GEG	1	25	33,7	23,8	15,9	30,2	0,10	GE
GER	GEG	1¼	32	42,4	23,8	15,9	39,0	0,14	GE
GER	GEG	1½	40	48,3	23,8	15,9	45,1	0,17	GE
GER	GEG	2	50	60,3	23,8	15,9	57,2	0,24	GE
GER	GEG	2½	65	73,0	23,8	15,9	69,1	0,30	GE
GER	GEG	2½	65	76,1	23,8	15,9	72,3	0,36	GE
GER	GEG	3	80	88,9	23,8	15,9	84,9	0,43	GE
GER	GEG	4	100	108,0	25,4	15,9	103,7	0,66*	GE
GER	GEG	4	100	114,3	25,4	15,9	110,1	0,67	GE
GER	GEG	5	125	133,0	25,4	15,9	129,1	1,10*	GE
GER	GEG	5	125	139,7	25,4	15,9	135,5	1,13	GE
GER	GEG	5	125	141,3	25,4	15,9	137,0	0,93	GE
GER	GEG	6	150	159,0	25,4	15,9	154,5	1,43*	GE
GER	GEG	6	150	165,1	25,4	15,9	160,9	1,48	GE
GER	GEG	6	150	168,3	25,4	15,9	164,0	1,50	GE
GER	GEG	8	200	219,1	30,2	19,1	214,4	2,94	GE
GER	GEG	10	250	273,0	32,0	19,1	268,3	5,20	GE
GER	GEG	12	300	323,9	32,0	19,1	318,3	6,00	GE

Material specifications

Housing: ductile iron conform to ASTM A536 GR 65-45-12

Coating:

- Hot dip galvanized
- Red paint coating RAL 3000, EPD Epoxy coating

Working pressure

300 PSI/2068 kPa

General notes:

- * No UL-approval.
- Pressure ratings listed are CWP (cold working pressure) or MWP (maximum working pressure) at a maximum service temperature of 50°C. This rating may occasionally differ from maximum working pressure listed and/or approved by UL and/or FM, as testing conditions and test pipes can differ. For more information, please contact info@pipinglogistics.eu.
- Maximum working pressure listed is total of internal and external pressures based on standard weight (ANSI) steel pipe and standard roll or cut groove in accordance with Profit specifications. For more information, please contact info@pipinglogistics.eu.
- For one time field test only, the maximum joint working pressure may be increased by 150% the figure shown.
- Warning: Piping systems must always be depressurized and drained before attempting disassembly and/or removal of any components.
- Profit reserves the right to change specifications, designs and/or standard equipment without notice and without incurring in any obligations.
- Profit red coated products are intended for piping with indoor application (EN 12944-2 corrosivity category C1 & C2). For outdoor installations near the sea (corrosivity category C3) we advise the use of our hot dip galvanized couplings and fittings. For application in corrosivity category C4 (higher salinity climate) or higher, please contact info@pipinglogistics.eu.
- We advise to always store our products in closed and dry environments.