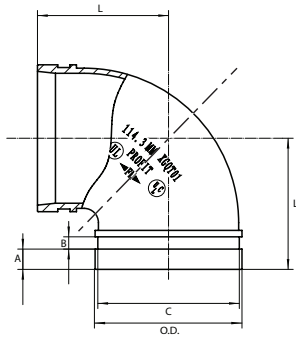


GROOVED ELBOW 90° GB90



Grooved elbows provide an economical and efficient method of changing direction in grooved piping systems.

Reference			Nominal size		Pipe Ø O.D.	Grooved elbow 90° dimensions				Weight	Marking
Red	Galva	White	NPS inch	DN mm	mm	L mm	A mm	B mm	C mm	kg	
GB90R	GB90G	GB90W	1	25	33,7	57	15,9	7,9	30,2	0,29	90S
GB90R	GB90G	GB90W	1¼	32	42,4	70	15,9	7,9	39,0	0,42	90S
GB90R	GB90G	GB90W	1½	40	48,3	70	15,9	7,9	45,1	0,48	90S
GB90R	GB90G	GB90W	2	50	60,3	70	15,9	7,9	57,2	0,60	GB90
GB90R	GB90G	GB90W	2½	65	73,0	76	15,9	7,9	69,1	0,88	GB90
GB90R	GB90G	GB90W	2½	65	76,1	76	15,9	7,9	72,3	0,85	GB90
GB90R	GB90G	GB90W	3	80	88,9	85	15,9	7,9	84,9	1,13	GB90
GB90R	GB90G	GB90W	4	100	108,0	102	15,9	9,5	103,7	1,93	GB90*
GB90R	GB90G	GB90W	4	100	114,3	102	15,9	9,5	110,1	1,85	GB90
GB90R	GB90G	GB90W	5	125	133,0	121	15,9	9,5	129,1	3,00	GB90*
GB90R	GB90G	GB90W	5	125	139,7	121	15,9	9,5	135,5	3,01	GB90
GB90R	GB90G	GB90W	5	125	141,3	121	15,9	9,5	137,0	3,40	GB90
GB90R	GB90G	GB90W	6	150	159,0	130	15,9	9,5	154,5	4,28	GB90*
GB90R	GB90G	GB90W	6	150	165,1	130	15,9	9,5	160,9	4,02	GB90
GB90R	GB90G	GB90W	6	150	168,3	140	15,9	9,5	164,0	4,75	GB90
GB90R	GB90G	GB90W	8	200	219,1	175	19,1	11,1	214,4	8,18	GB90
GB90R	GB90G	GB90W	10	250	273,0	215	19,1	12,7	268,3	13,37	GB90
GB90R	GB90G	GB90W	12	300	323,9	220	19,1	12,7	318,3	16,87	GB90
GB90R	GB90G	GB90W	14	350	356,0	245	23,8	15,9	350,0	33,15	GB90**
GB90R	GB90G	GB90W	16	400	406,4	285	23,8	15,9	400,8	45,50	GB90**

Material specifications

Housing: ductile iron conform to ASTM A536 GR 65-45-12

Coating:

- Hot dip galvanized
- Red paint coating RAL 3000, EPD Epoxy coating
- White powder coating RAL 9010

Working pressure

300 PSI/2068 kPa/20,7 barg

General notes:

- * No UL-approval / ** No FM- and UL-approval.
- Pressure ratings listed are CWP (cold working pressure) or MWP (maximum working pressure) at a maximum service temperature of 50°C. This rating may occasionally differ from maximum working pressure listed and/or approved by UL and/or FM, as testing conditions and test pipes can differ. For more information, please contact info@pipinglogistics.eu.
- Maximum working pressure listed is total of internal and external pressures based on standard weight (ANSI) steel pipe and standard roll or cut groove in accordance with Profit specifications. For more information, please contact info@pipinglogistics.eu.
- For one time field test only, the maximum joint working pressure may be increased by 150% the figure shown.
- Warning: Piping systems must always be depressurized and drained before attempting disassembly and/or removal of any components.
- Profit reserves the right to change specifications, designs and/or standard equipment without notice and without incurring in any obligations.
- Profit red coated products are intended for piping with indoor application (EN 12944-2 corrosivity category C1 & C2). For outdoor installations near the sea (corrosivity category C3) we advise the use of our hot dip galvanized couplings and fittings. For application in corrosivity category C4 (higher salinity climate) or higher, please contact info@pipinglogistics.eu.
- We advise to always store our products in closed and dry environments.