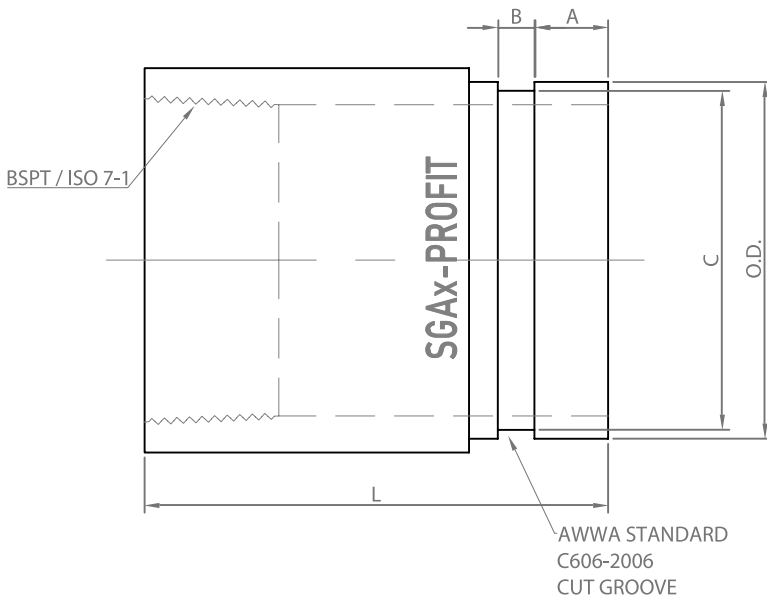


# SOCKET GROOVED ADAPTER SGA



Socket grooved adapters allow the connection between threaded and grooved end equipment.

Reference		Nominal size		Pipe Ø O.D.	Socket grooved adapter dimensions				Weight	Marking
Black uncoated	Zinc electroplated	NPS inch	DN mm	mm	L mm	A mm	B mm	C mm	kg	
SGA1 - BLACK	SGA1 - GALVA	1	25	33,7	75	15,9	7,9	30,2	0,21	SGA
SGA11/4 - BLACK	SGA11/4 - GALVA	1¼	32	42,4	100	15,9	7,9	39,0	0,37	SGA
SGA11/2 - BLACK	SGA11/2 - GALVA	1½	40	48,3	100	15,9	7,9	45,1	0,47	SGA
SGA2 - BLACK	SGA2 - GALVA	2	50	60,3	100	15,9	7,9	57,2	0,56	SGA
SGA21/2 - BLACK	SGA21/2 - GALVA	2½	65	76,1	100	15,9	7,9	72,3	0,73	SGA
SGA3 - BLACK	SGA3 - GALVA	3	80	88,9	100	15,9	7,9	84,9	0,80	SGA
SGA4 - BLACK	SGA4 - GALVA	4	100	114,3	100	15,9	9,5	110,1	1,54	SGA

## Material specifications

**Body:** carbon steel

**Surface finish:** black uncoated / zinc electroplated

## Working pressure

300 PSI / 2068 kPa / 20,7 barg

## General notes:

- Pressure ratings listed are CWP (cold working pressure) or MWP (maximum working pressure) at a maximum service temperature of 110°C. For more information, please contact [info@pipinglogistics.eu](mailto:info@pipinglogistics.eu).
- Maximum working pressure listed is total of internal and external pressures, based on standard weight (ANSI) steel pipe and standard roll or cut groove, in accordance with Profit specifications. For more information, please contact [info@pipinglogistics.eu](mailto:info@pipinglogistics.eu).
- For one time field test only, the maximum joint working pressure may be increased one and a half times the figure shown.
- Warning: Piping systems must always be depressurized and drained before attempting disassembly and/or removal of any components.
- Piping Logistics reserves the right to change specifications, designs and/or standard equipment without notice and without incurring in any obligations.
- We strongly advise to always store our products in closed and dry warehouses.